



EARLY BIRD
SPECIAL!



SIGN UP & PAY BY DECEMBER 31ST TO LOCK IN 2019 PRICES!

SPONSORSHIP OPPORTUNITIES

NEW DATE!

A FUN & EDUCATIONAL EVENT TO INSPIRE CHILDREN'S INTEREST IN CONSTRUCTION!

SATURDAY | MAY 16 | 2020 | 9AM-3PM

Kids Building Wisconsin is a family favorite, community event that focuses on getting kids interested in exciting construction-industry careers. At our fun, interactive event, kids participate in over 40 hands-on exhibits run by local trades and area businesses.

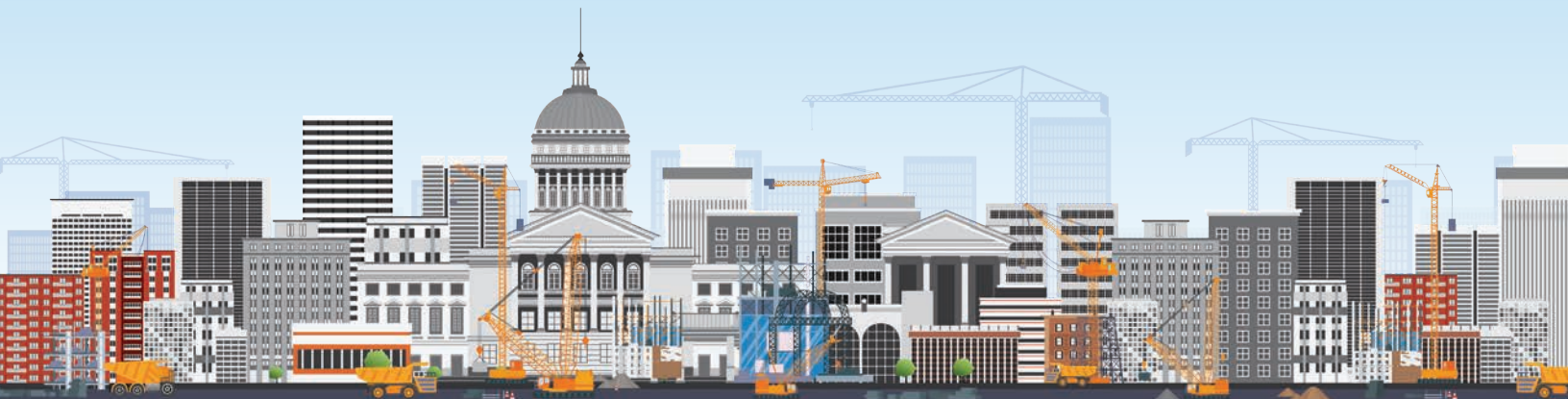
Some of last year's popular exhibits included:

- Boom Lift Rides
- Construction Virtual Reality
- Carpenters Union Workshop
- Painters & Allied Trades painting and activity tent

The positive community feedback and media attention to Kids Building Wisconsin has been outstanding. Your generous sponsorship will help us increase our influence through an even bigger and better event this year. Based upon last year's attendance of 2,500 kids and families, we anticipate 3,000 kids and their families this year. With area skilled trades, contractors, architects, and suppliers already pledging support and participation, now is your chance to take part in this fantastic event.



Kids Building Wisconsin is a 501(c)(3) organization run by a volunteer Board of Directors. Our goal is to broaden our impact to include scholarships and other support to young people interested in getting into the construction industry.



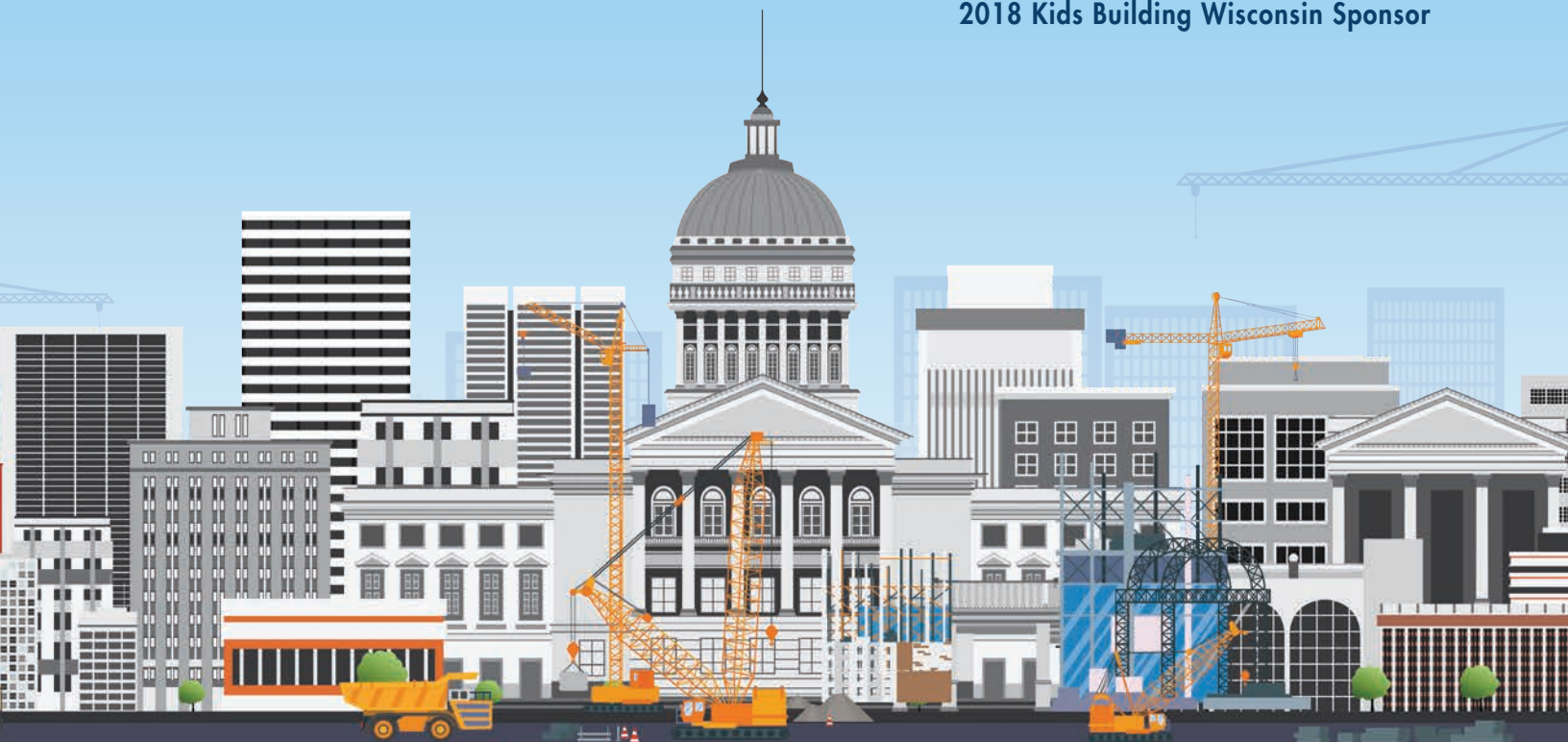
KIDS BUILDING WISCONSIN 2019



#KIDSBUILD20

"We are so proud to be part of this unique event where all contractors—large and small—come together for one day to promote the trades and inspire future builders in our community. It was truly priceless to watch young budding builders grab mags and trowels to simulate finishing concrete with our crews at our exhibit. The look of awe in the kids' faces that quickly turned into unfiltered excitement as they got to experience construction equipment like semis and bobcats up close was truly contagious!"

Dena Gullickson, Stevens Construction
2018 Kids Building Wisconsin Sponsor



EARLY BIRD SPONSORSHIP LEVELS

SIGN UP & PAY BY DECEMBER 31ST TO LOCK IN 2019 PRICES!

2019 PRICING:
2020 PRICING:

TITLE

\$5,000

\$5,000

GOLD

\$3,000

\$3,000

SILVER

\$1,000

\$1,500

BRONZE

\$700

\$800

FRIEND

\$300

\$400

Video Feature (filmed by KBW)	✓				
Mention in print advertising	✓				
Logo on homepage of website	✓				
Logo on Facebook cover image	✓				
Logo on promotional banners and signage	✓				
Logo in promotional video	✓	✓			
Logo on event map	✓	✓			
Logo on flyers and promotional items	✓	✓			
Logo on event t-shirts	✓	✓	✓		
Announced mention at event	✓	✓	✓		
Banner at event	Large Banner	Medium Banner	Small Banner	Sign	
Social media mention	✓✓✓	✓✓	✓	✓	
Listed on sponsor page of website	Logo	Logo	Logo	Company Name	Company Name
Event exhibit	Optional*	Optional*	Optional*	Optional*	Optional*



OTHER SPONSORSHIP OPPORTUNITIES:



Do you have ideas that don't quite fit our sponsorship packages?

Contact: info@kidsbuildingwi.org

*For exhibiting information and details on what's included, please go to page 5
"Exhibiting at Kids Building Wisconsin."

SPONSORSHIP COMMITMENT FORM

Please complete this form and return it with your check by **March 6th** to become an official Kids Building Wisconsin sponsor.

Company							
Contact							
Address							
Phone Number							
Email Address							
Sponsor Level	Friend Sponsor	Bronze Sponsor	Silver Sponsor	Gold Sponsor	Title Sponsor		
Exhibit Option*	I/we plan to exhibit. I/we do not plan to exhibit.		Apprentice Section (Ages 4-8)		Journeyman Section (Ages 8-12)		
What will your Exhibit be?							
Exhibit utility needs (limited supply)	Power	Running Water	Access to Water	CHAIRS	How Many?	TABLE	How Many?

Please contact your Kids Building Wisconsin representative if you have special exhibit space needs.

*Exhibit shall run 9 am - 3 pm

SPONSORSHIP DEADLINE: MARCH 6TH

! SIGN UP & PAY BY DECEMBER 31ST TO LOCK IN 2019 PRICES

Email this form along with your company logo (vector file format) to **INFO@KIDSBUILDINGWI.ORG**



Please send and make checks payable to:

Kids Building Wisconsin
2625 Research Park Drive
Fitchburg, WI 53711

EXHIBITING AT KIDS BUILDING WISCONSIN

What does being an exhibitor entail?

Our goal is to provide interactive, educational, and hands-on exhibits for kids ages 4-12. Although not every exhibit interests every age, we want to have engagement opportunities for everyone at our event. In prior years, exhibitors have included local trades, general contractors, subcontractors, suppliers, architects, engineering firms, and other industry-related groups interested in promoting construction careers.

It is expected that all exhibitors run their booth for the entire duration of the event. (9 am - 3 pm)
For additional information about what being an exhibitor includes, see below:

What You Provide:	What We Provide:	Benefits of Exhibiting:
<p>The Activity (We're always happy to brainstorm ideas!)</p> <p>Volunteers to Run Your Station (About 3-5 but could be more depending on activity)</p> <p>Any Materials Required for Your Activity (About 2,500 kids attended in 2019)</p> <p>Prizes, or Other Giveaways, if Desired</p>	<p>1 - 10x10 Tent (no sides)</p> <p>1 - 8 ft Table</p> <p>2 Chairs</p> <p>Lunch for Volunteers</p>	<p>Goodwill in Community</p> <p>Marketing (See Sponsorship Levels)</p> <p>Opportunity to Interact with Local Industry Professionals</p> <p>Fun Day Celebrating our Industry</p>



ARCHITECT STATION
presented by Veridian Homes



VR GOGGLES
presented by Findorff



DEMOLITION WALL
presented by Tri-North Builders



BIG EQUIPMENT
presented by Ideal Crane/Airing

Our **APPRENTICE SECTION** will focus on youngsters, ages 4-8, while our **JOURNEYMEN SECTION** will focus on kids ages 8-12.
A Majority of our attendees are in the apprentice section but our goal is to achieve just as much success for the Journeymen Section.

We're here to help!

Have questions? Email info@kidsbuildingwi.org



KIDS BUILDING WISCONSIN 2020 MAP

Booth location priority level will be based on amount of booth information provided.
Final selection of booth location is at the discretion of the site coordinator.



MAP KEY

-  POWER & WATER
-  POWER

BOOM LIFTS

TREE HOIST